

Unique Compressed Air  
Management System



GD Connect 12



The perfect fit





# State-of-the-art Technology

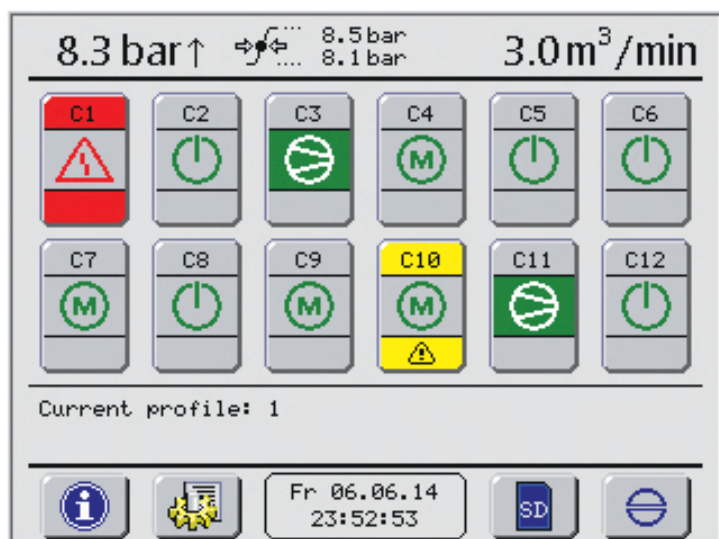
## Advanced Microprocessor Technology

Safe and fast exchange of large amounts of data is ensured by large memory capacity using the latest microprocessor technology at the heart of the **GD Connect 12**.

- Easy to install
- Improved performance and efficiency
- Simple to operate
- Reduced downtime
- Detailed management reports

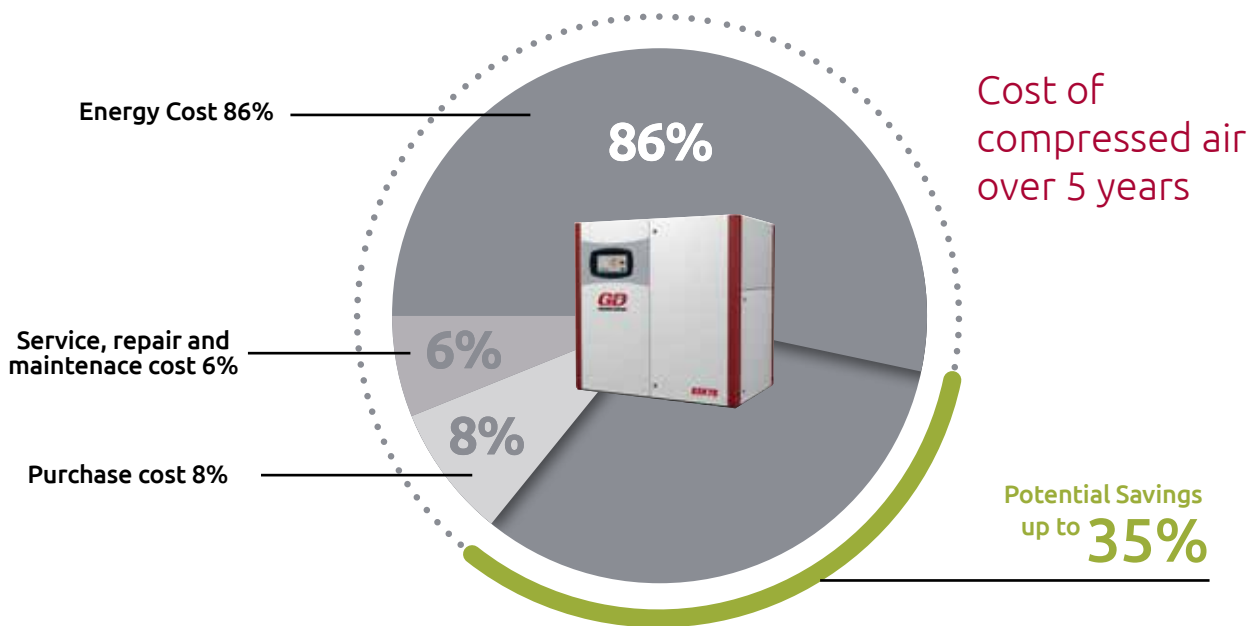


*GD Connect 12*



# Huge Energy Savings in multicompressor stations

The **GD Connect 12** is the first choice when looking to optimise an existing compressed air system. The pressure reductions are achieved as a result of the narrow pressure band control helping to considerably reduce power consumption both of small and larger compressed air systems.



## Your benefits at a glance:

- The GD Connect 12 can intelligently control up to 12 fixed speed or variable speed compressors
- Intelligently selecting the right combination of compressors
- It reduces energy consumption by tightening the network pressure to the smallest possible band
- Each 1 bar decrease potentially results in a 7% reduction in energy consumption and as much as 25% decrease in air leakage losses
- Keeping off load running to the absolute minimum





# All key information via easy-to-use **Touchscreen Display**

A visual touchscreen, gives plant managers a comprehensive overview of the complete system, including downstream equipment to help improve the complete network performance.

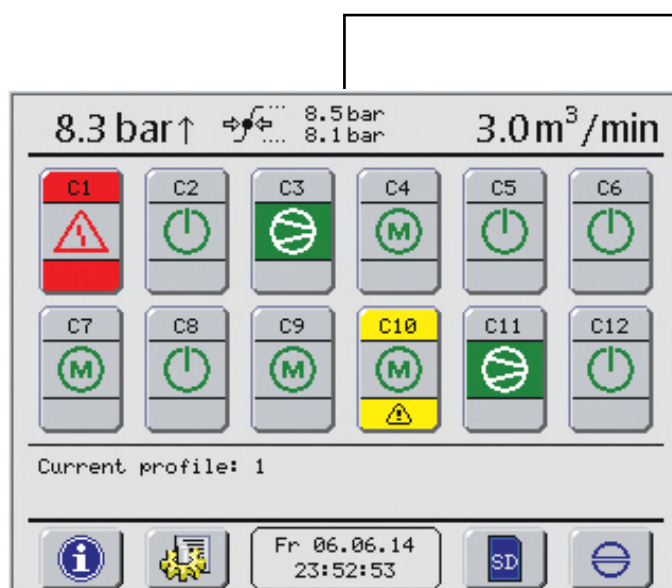
This can include information such as the status of the whole system or of each compressor connected, as well as network pressure, compressed air consumption and pressure range, all of which can be presented in graphs or tables.

In addition, data can be transferred via removable SD card to a PC for further analysis and management reports.

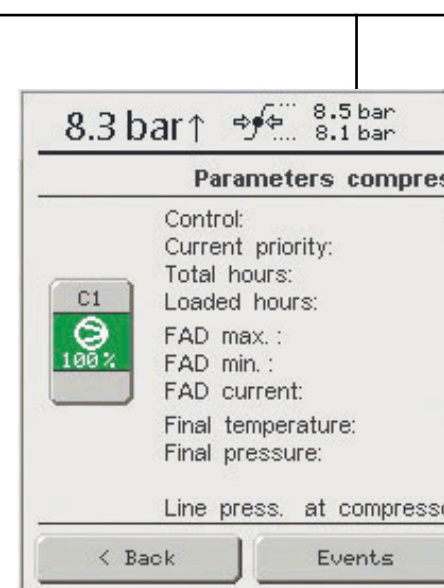
## Unique Setting-Up Function

Thanks to our modern Commissioning Wizard, the set-up time is reduced to a minimum.

Gardner Denver has designed the controller to be very easy to install, with a series of on-screen prompts that guide the commissioning engineer through the set up and confirm when each parameter has been programmed correctly.



**User friendly intuitive display**



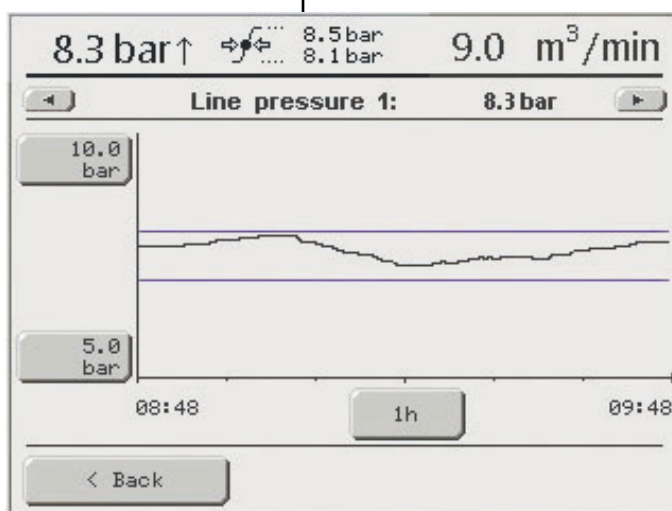
**Compressed air demand**

EASY DATALOGGING VIA SD CARD FOR EXTENSIVE ENERGY SAVING ANALYSIS (ALSO EXCEL COMPATIBLE).

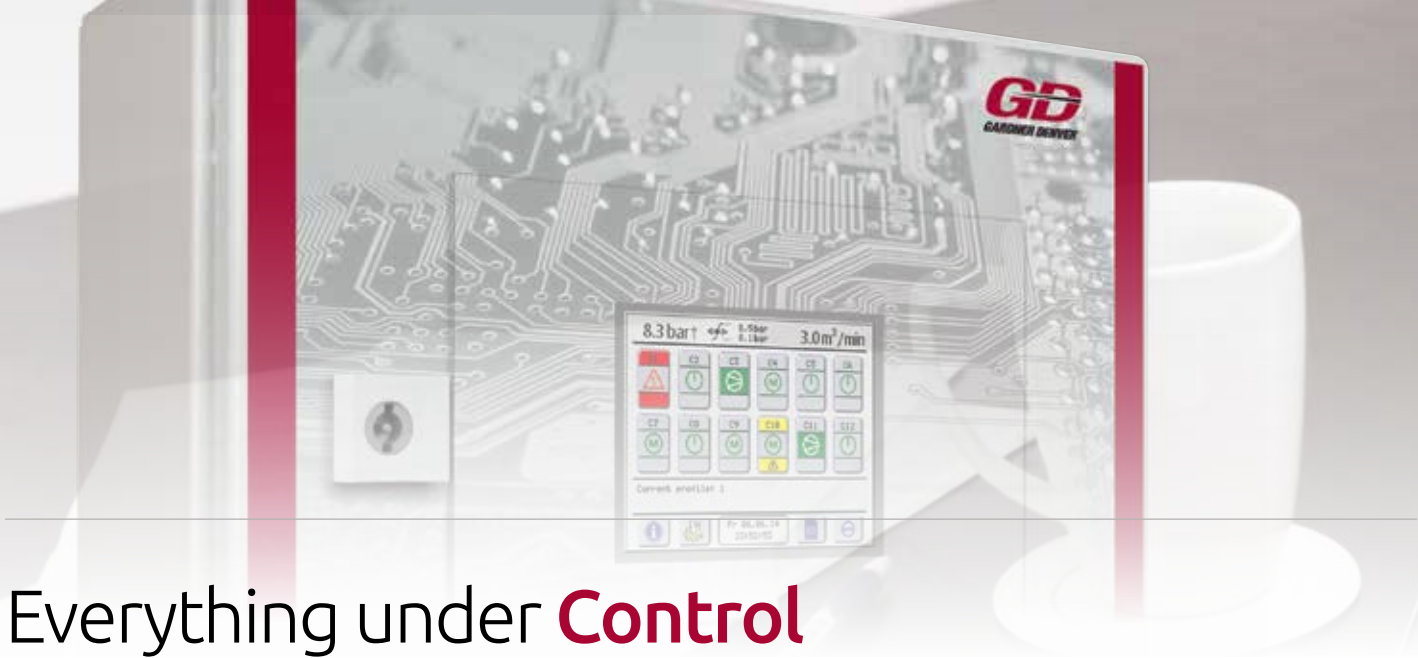


Analog inputs for:

- Network pressure
- Volume flow sensor
- Temperature sensor
- Dew point sensor



Characteristics of each compressor



# Everything under **Control**

The GD Connect 12 compressor management controller ensures reduced energy consumption whilst enhancing the control of the compressed air equipment.

## Control Transparency

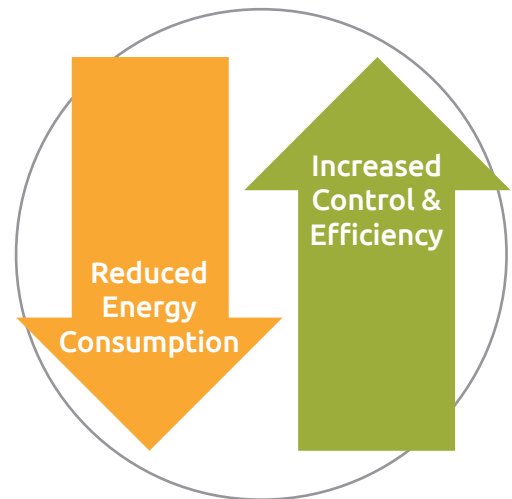
Unlike traditional control systems, crucial efficiency related parameters are visually displayed. This provides a transparent log of compressor station behavior and its ongoing efficiency.

## Intelligent “Self-Learning” Control

The GD Connect 12 control system is designed to continuously balance demand and supply, enabling the most efficient compressor combination to work at all times. A permanent consumption calculation ensures efficient operation of interconnected compressors at all times.

## Multi-Functionality

Connection of various peripheral equipment (e.g. temperature sensors, flow meter, pressure dew point, operating state of dryers, airless drains, filters, etc).

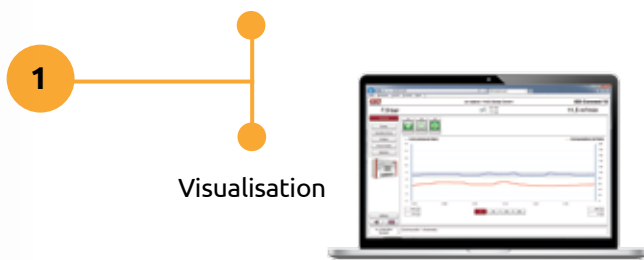
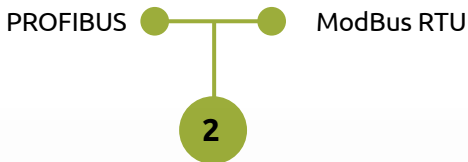


(controlled and monitored via RS 485 interface)



# Remote **monitoring & visualisation**

- 1 Visualize your complete compressed air installation via LAN network. Any number of users can access the online visual display system via the Webserver Module without any loss in speed. The user can visualise selected data of a compressor system via PC which can also be viewed on the screen of the GD Connect 12. Email messaging ensures automatic notification of faults, warnings and statistics.
- 2 Monitor your complete compressed air installation via field bus. Features include warning indications, compressor shutdown warning and maintenance scheduling – easy connection to a PROFIBUS or ModBus-RTU network ensured.



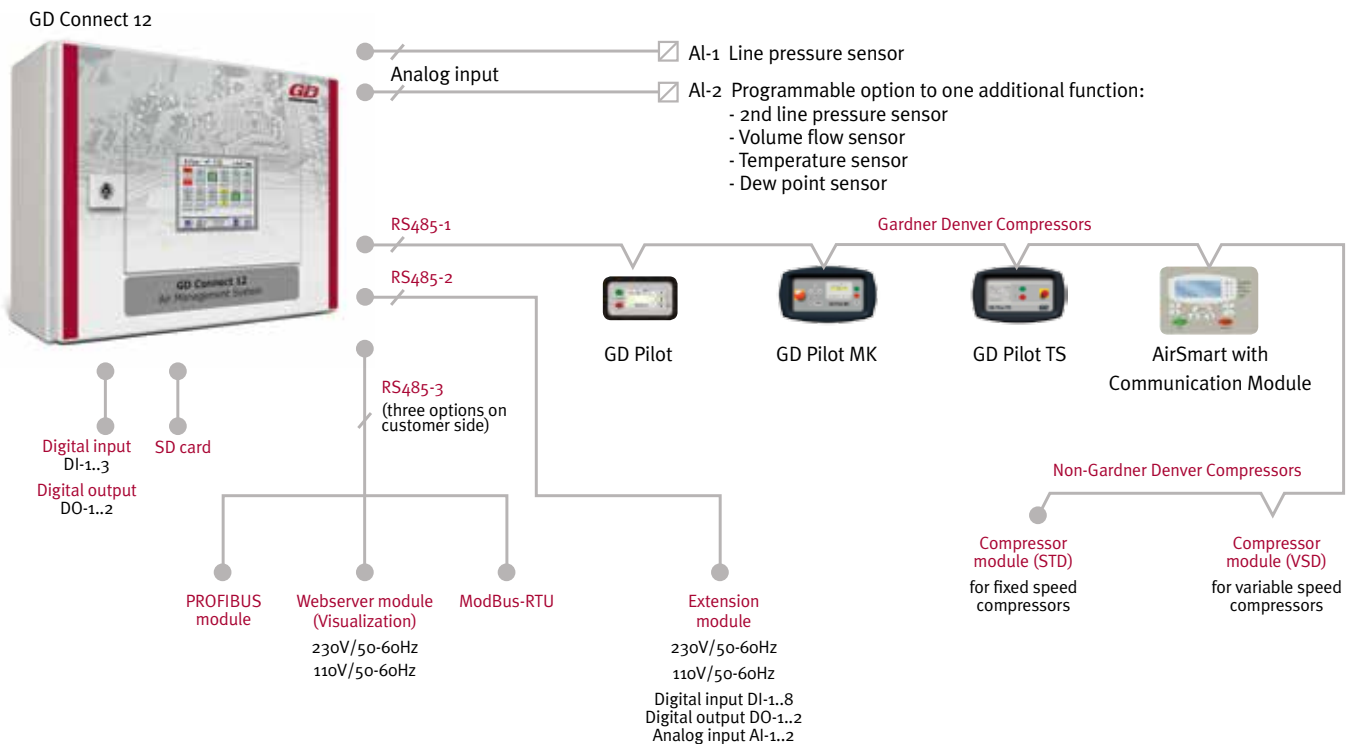
Dryers

Filters & Drains

(monitored via Digital Input)

| Electrical connection            |   |
|----------------------------------|---|
| System                           | 1~/N/PE                                     |
| Voltage                          | 110/230V +/-10% 50/60 Hz                    |
| Display                          |   |
| Type                             | Colour graphics display with touch function |
| Screen Size                      | 5, 7"                                       |
| Interfaces                       |   |
| Analogue inputs                  | 2   |
| Digital inputs                   | 3   |
| Relay outputs                    | 2   |
| Memory card                      |   |
| Type                             | SD card                                     |
| Connection for compressors       |   |
| Quantity                         | max. 12 compressors                         |
| Interface                        | RS485                                       |
| Distance from GD Connect 12      | max. 1200m                                  |
| Customer interface               |   |
| Interface                        | RS485                                       |
| Distance from GD Connect 12      | max. 1200m                                  |
| Protocol                         | ModBus-RTU or PROFIBUS (optional)           |
| Permissible ambient temperatures |   |
| Operations                       | 0 to 55°C                                   |
| Storage                          | -25 to 75°C                                 |

| EMC Conformity   |  |
|--|--|
| Emissions  | DIN EN 61000-6-3                                   |
| Interface suppression  | DIN EN 61000-6-2                                   |
| Housing  |  |
| Dimensions (W x H x D)   | 380 x 300 x 155 mm                                 |
| Design   | Steel plate housing                                |
| Type of protection   | IP54   |
| Weight   | 11kg   |
| Scope of supply  |  |
| <ul style="list-style-type: none"> <li>- GD Connect 12 including cable glands</li> <li>- Network pressure sensor</li> <li>- Set of plugs for connecting to compressor controllers</li> <li>- SD card</li> <li>- Documentation</li> </ul> |  |
| Options  |  |
| Compressor module (STD)  | For connecting fixed speed compressors (non-GD)    |
| Compressor module (VSD)  | For connecting variable speed compressors (non-GD) |
| Extension module   | For extending the programmable inputs / outputs    |
| PROFIBUS module  | For connection to a PROFIBUS network               |
| Webserver module   | For visualising via LAN                            |



gdcompressors.eu@gardnerdenver.com  
www.gardnerdenverproducts.com

Specifications subject to change without notice.  
Copyright 2014 Gardner Denver.

G681.GB.10/14.C1